

POPULATION HEALTH DIVISION

Protecting and Promoting Health & Equity

Public Health Accreditation: Alignment of Headline Indicators and Strategies to the San Francisco Health Network and San Francisco Health Improvement Partnership

Israel Nieves-Rivera

Office of Equity and Quality Improvement

Population Health Division

San Francisco Department of Public Health

March 20, 2014



Three prerequisites to apply for Public Health Accreditation



Community Health Assessment (CHA)

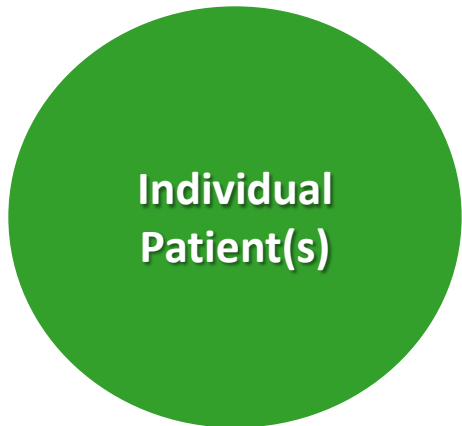
Community Health Improvement Plan (CHIP)

Public Health Strategic Plan





**Community Based
Organizations, Clinics,
Hospitals and Universities**

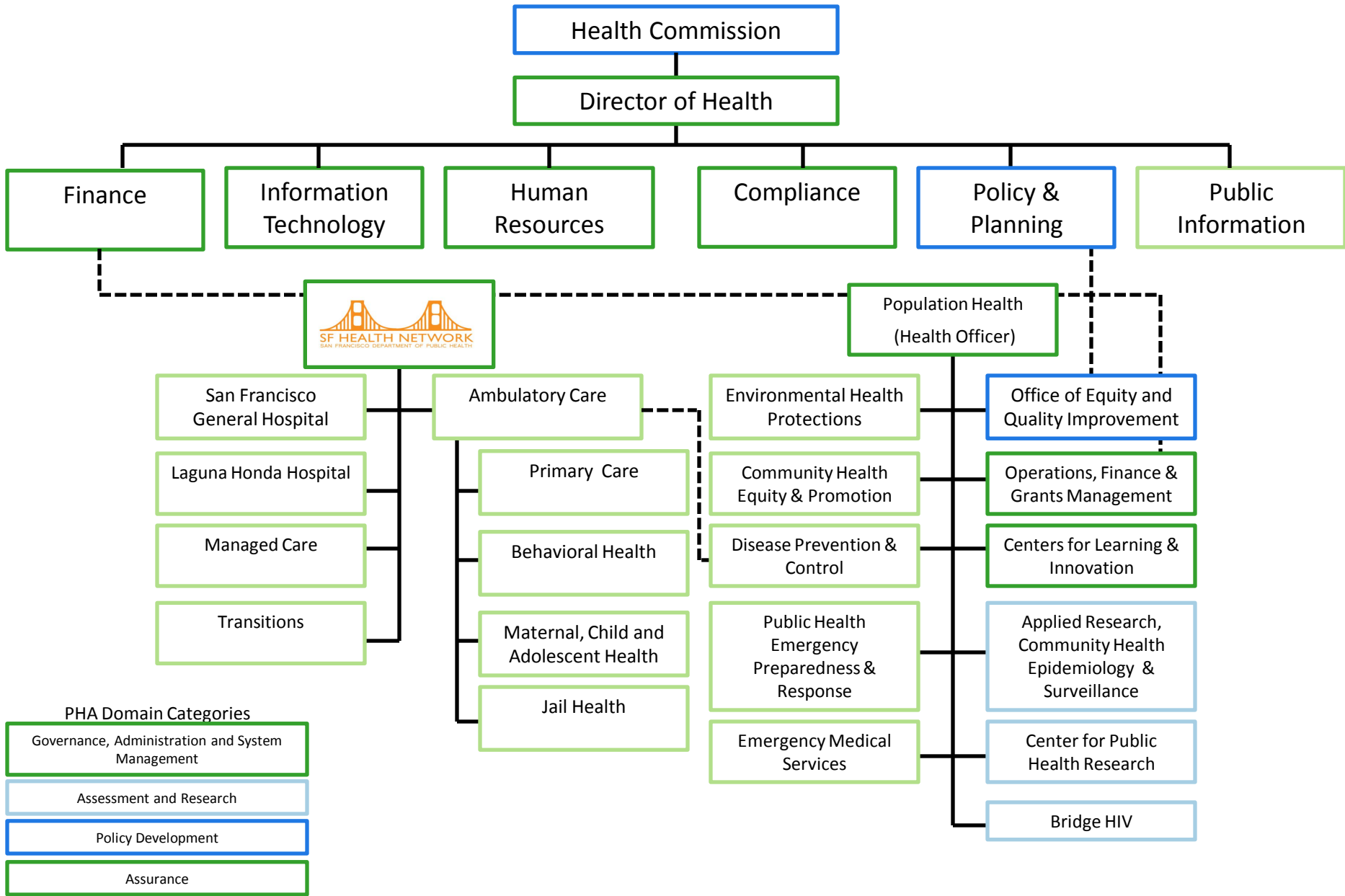


**DPH Provide Clinical Care
to the Patient**



**Provide strategies and
services to communities
and or target populations
(e.g., neighborhood,
race/ethnicity, gender,
behavior etc..)**







POPULATION HEALTH DIVISION

SAN FRANCISCO DEPARTMENT OF PUBLIC HEALTH

PROTECTING AND PROMOTING HEALTH AND EQUITY



OUR MISSION

Drawing upon community wisdom and science, we support, develop, implement evidence-based policies, practices, and partnerships that protect and promote health, prevent disease and injury, and create sustainable environments and resilient communities.

OUR VISION

To be a community-centered leader in public health practice and innovation.

STRATEGIC DIRECTIONS

PHD STRATEGIES AND PERFORMANCE MEASURES 2012-2015

PUBLIC HEALTH ACCREDITATION (PHA) DOMAINS CATEGORIES

ASSESSMENT / RESEARCH

1. Superb knowledge management systems and empowered users

STRATEGY 1 : Build an integrated information and knowledge management infrastructure that enables us to monitor health, to inform and guide activities, and to improve staff and systems performance.

PERFORMANCE MEASURES:

- 1.1. Build a strong, highly functional information technology (IT) and technical assistance infrastructure in alignment with Department of Public Health IT strategy.
- 1.2 Establish a highly functional, integrated infectious disease system to collect and report data, and to deliver and monitor public health actions.

2. Assessment and research aligned with our vision and priorities

STRATEGY 2: Integrate, innovate, improve, and expand efforts in community and environmental assessments, research, and translation.

PERFORMANCE MEASURES:

- 2.1 Create an action plan that supports division priorities.
- 2.2 Build cross-section interdisciplinary teams to improve health outcomes and programmatic activities.

POLICY DEVELOPMENT

3. Policy development with collective impact

STRATEGY 3: Conduct effective policy & planning that achieves collective impact to improve health and well-being for all San Franciscans.

PERFORMANCE MEASURES:

- 3.1 Establish a division-wide Performance Management, Equity & Quality Improvement Program.
- 3.2 Establish systems and partnerships to achieve and maintain Public Health Accreditation.
- 3.3 Develop a prioritized legislative agenda and strategic implementation plan to address health status and inequities.

ASSURANCE

4. Assurance of healthy places and healthy people

STRATEGY 4: Lead public health systems efforts to ensure healthy people and healthy places

PERFORMANCE MEASURES:

- 4.1 Establish community-centered approaches that address the social determinants of health and increase population well-being.
- 4.2 Sustain and improve the infrastructure and capacity to support core public health functions, including legally mandated public health activities.

GOVERNANCE, ADMINISTRATION, AND SYSTEMS MANAGEMENT

5. Sustainable funding and maximize collective resources

STRATEGY 5: Increase administrative, financial and human resources efficiencies within the division.

PERFORMANCE MEASURES:

- 5.1 Establish a centralized business office for the division.
- 5.2 Appropriately address the human resource issues regarding civil service and contract employees.
- 5.3 Establish a centralized grants management and development system for the division.

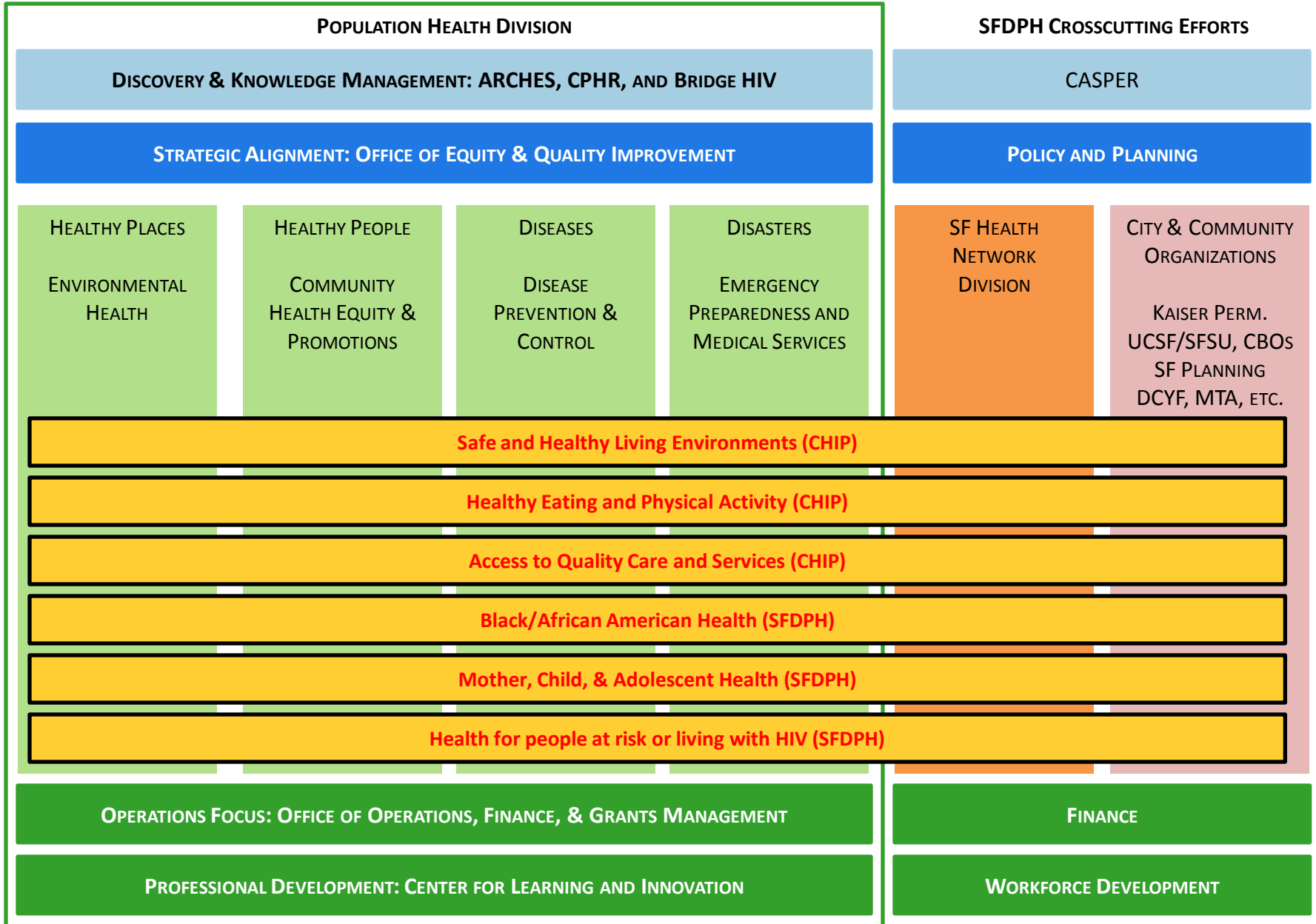
6. Learning organization with a culture of trust and innovation.

STRATEGY 6: Build a division-wide learning environment that supports public health efforts.

PERFORMANCE MEASURES:

- 6.1 Establish a division-wide Professional Development Plan and Workforce Development program.

STRATEGIC ORGANIZATION FRAMEWORK



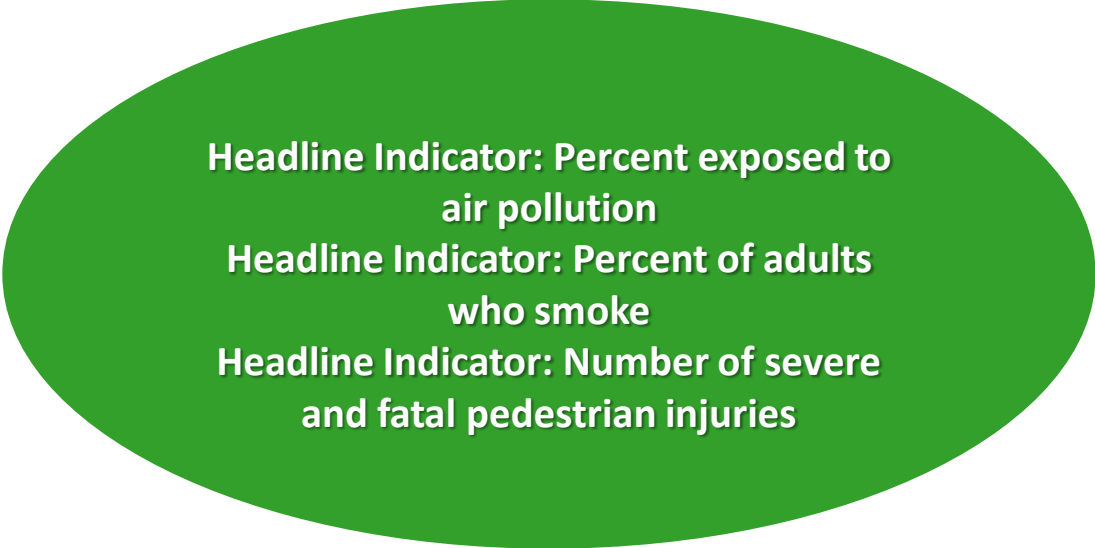
Focus Area: (Priority identified)

Headline Indicators:
(Name of the indicators)





Focus Area: Safe and Healthy Living Environments (CHIP)





Focus Area: Healthy Eating and Physical Activity (CHIP)

Headline Indicator: Percent of residents who have food security (resource, access, consumption)

Headline Indicator: Percent of residents who maintain a healthy weight

Headline Indicator: Percent of residents who have adequate physical activity





Focus Area: Access to Quality Care and Services (CHIP)

Headline Indicator: Percent of San Francisco residents enrolled in either health insurance or Healthy San Francisco



Focus Area: Black/African-American Health (DPH Priority)

Headline Indicator: Percent of Black/African-Americans with heart disease

Headline Indicator: Mortality rate of Black/African-American women with breast cancer

Headline Indicator: Rates of Chlamydia among young Black/African-American women

Headline Indicator: Mortality rates among Black/African-American men due to alcohol



Focus Area: Mother, Child, and Adolescent Health (DPH Priority)

Headline Indicator: Percent of pre-term infants

Headline Indicator: Rate of substantiated child maltreatment

Headline Indicator: Proportion of children with healthy teeth (annual dental visit and no caries)



Focus Area: Health for People At Risk or Living with HIV (DPH Priority)

Headline Indicator: Number of new HIV infections

Headline Indicator: Percent of newly diagnosed with HIV who receive care

Headline Indicator: Percent of HIV infected who are virally suppressed



Focus our efforts on
evidence based
practices

Use Health IT and
data to identify
patients/communities
who need support

Use Team-Based Care
across/ Collective
approaches to
identify best practice
and reward and
recognize excellence



Thank you and
Questions?

